

 **SERIES****950E EXCAVATOR**

- **6 Selectable Working Modes**

LiuGong E series excavators feature 6 selectable working modes - Power, Economy, Fine, Lifting, Breaker, Attachment that optimize performance and fuel consumption to your specific conditions.

- **Operational Safety**

Roll Over Protection System (ROPS) and Falling Object Protection System (FOPS) are optional. Inspection parts, filters and water separator are conveniently located.

- **Ergonomic Design**

Ergonomically designed cab with great visibility, new multi-function LCD monitor and suspension seat provide the most comfortable working environment.

- **Tough Components**

Reinforced undercarriage components, heavy duty boom and arm allow the excavators to work hard for longer.

950E SPECIFICATIONS >>>

PERFORMANCE PARAMETERS

Operating Weight	46,500~48,300 kg
Std. Bucket Heaped Capacity (Referenced)	3.2 m ³
Maximum Travel Speed	5.3 km/h
Swing Speed	8.5 rpm
Drawbar Pull	386 kN
Bucket Digging Force (ISO)	310 kN
Arm Digging Force (ISO)	287 kN

ENGINE

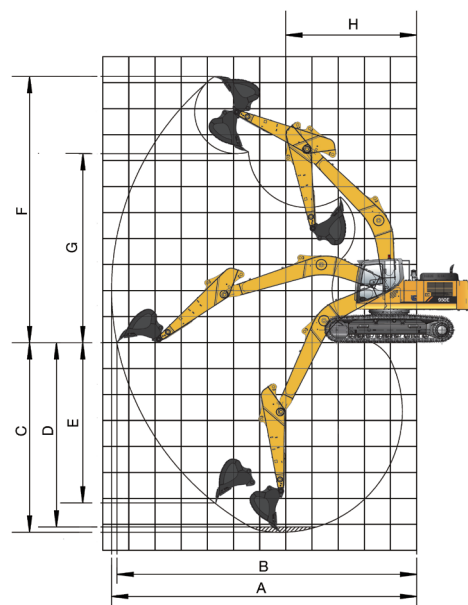
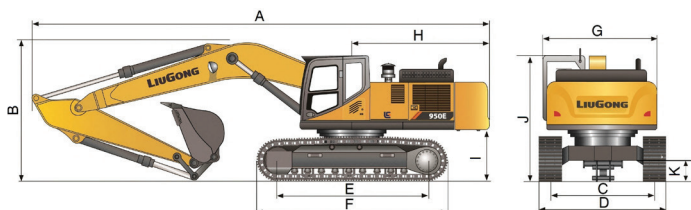
Emission Regulation	Tier3 / Stage IIIA
Manufacturer	Cummins
Model	QSM11
Rated Power	280 kW (376 hp / 381 ps) @ 2,000 rpm
Net Power	260 kW (349 hp / 354 ps) @ 2,000 rpm
Peak Torque	1,898 N·m @ 1,400 rpm
Number of Cylinders	6
Displacement	10.8 L

UNDERCARRIAGE

Number of Shoes per Side	51
Number of Bottom Rollers per Side	9
Number of Upper Rollers per Side	2

DIMENSIONS

A Shipping Length	11,515 mm
B Shipping Height	3,810 mm
C Track Gauge	2,740 mm
D Undercarriage Width	3,340 mm
E Length to Center of Rollers	4,257 mm
F Track Length	5,256 mm
G Overall Width of Upper Structure	3,180 mm
H Tail Swing Radius	3,640 mm
I Counterweight Ground Clearance	1,324 mm
J Overall Height of Cab	3,307 mm
K Min. Ground Clearance	532 mm



WORKING RANGE

Boom Length	6,500 mm
Arm Length	2,550 mm
A Max. Digging Reach	10,625 mm
B Max. Digging Reach on Ground	10,388 mm
C Max. Digging Depth	6,521 mm
D Max. Digging Depth, 2.44 m (8') level	6,337 mm
E Max. Vertical Wall Digging Depth	5,204 mm
F Max. Cutting Height	9,977 mm
G Max. Dumping Height	7,038 mm
H Min. Front Swing Radius	4,645 mm

HYDRAULIC SYSTEM

Main Pumps Total Flow	2 x 380 L/min
Relief Pressure, main	34.3 MPa

SERVICE CAPACITIES

Fuel Tank	650 L
Engine Oil	37.8 L
Cooling System	50 L
Hydraulic Reservoir	290 L
Hydraulic System Total	470 L

Specifications and design are subject to change notice. Machines shown may include optional equipment. LiuGong standard and optional equipment may vary from region to region. Please consult your LiuGong dealer for information specific to your area. Engine power kW is converted to horsepower (1 kW=1.3596 ps and 1 kW=1.3410 hp) in this file.

Head Office

Komplek Pemuda City Walk Blok B No.30,
Jalan Pemuda, Kota Pekanbaru, Riau 28291
Telp : +62-821-2790-0894
Email : admin.service@bctrn.co.id

Representative Office

Springhill Office Tower Lt.11
Jl. Benyamin Sueb Ruas D7 Blok D
Kec. Pademangan, Jakarta Utara 14410